

**easydoor SOFTWARE**  
**USER'S MANUAL**



## Introductions

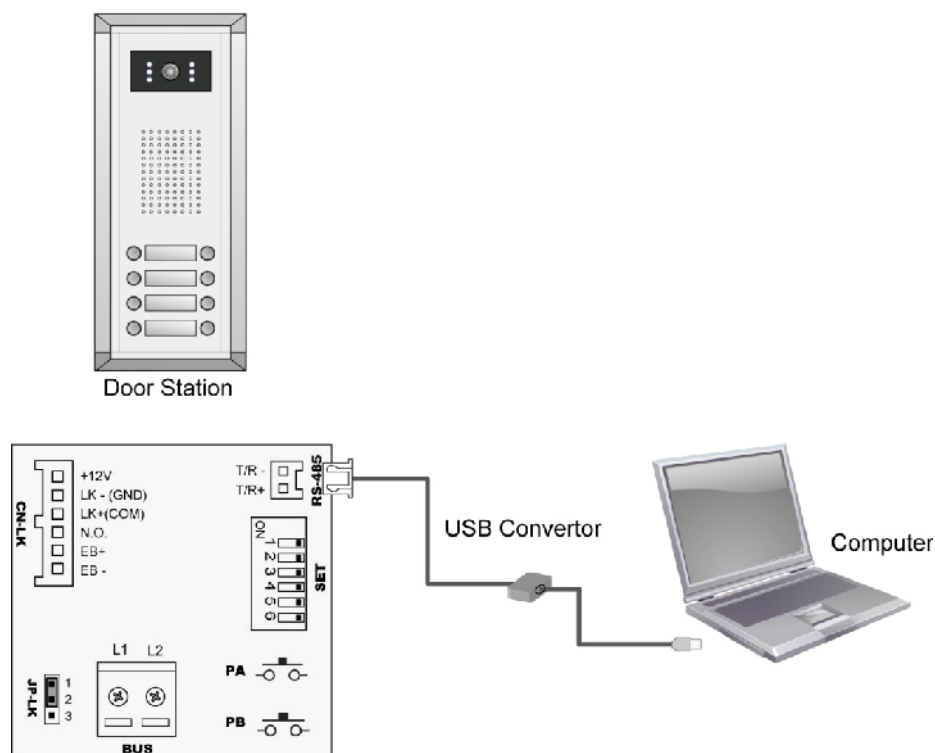
easyconfig software is a powerful configuration and debug tool to setup the 2-wire system. As simplified software tool, easyconfig allows installers to check and program Door Stations rapidly, which is especially useful in complex installation.

easyconfig allows you to view device properties, modify parameters, re-locate Call Buttons mapping and establish Name List in a PC and then download to the Door Station. Furthermore, you can use easyconfig as a assistance in field debug and maintains, by means of printing Programming Table, online search and diagnose tools.

easyconfig contains a project management utility, which helps installers manage project and device information.

## 2. System Requirement and Connection

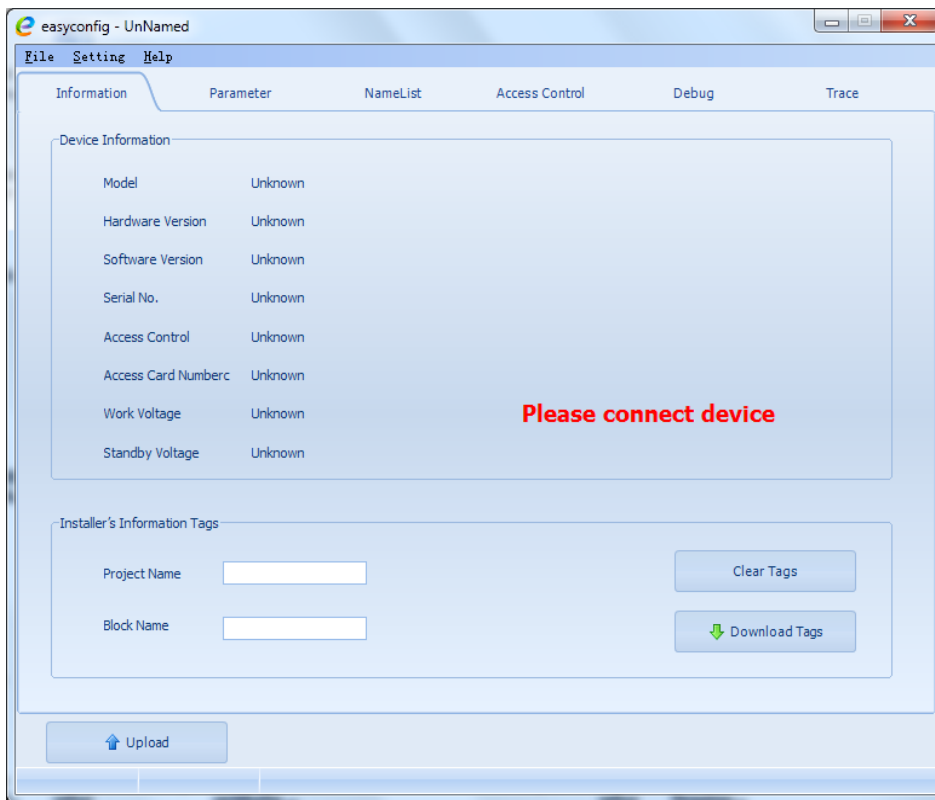
easyconfig can be installed in a PC or laptop with Microsoft Windows XP, VISTA, 7, Server 2003 or Server 2008 operating system, and at least 512M memory, and 100M free hard disc space. Please note, a spare USB2.0 port is necessary to connect interface converter.



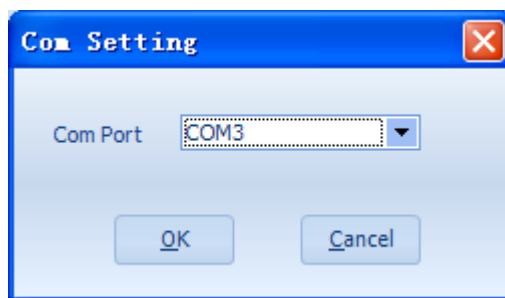
Note . The Monitors in above diagram are not necessary.

## Start easyconfig and Setup The COM Port

Run easyconfig software



Select 'Setting → COM Setting', and select the COM port.



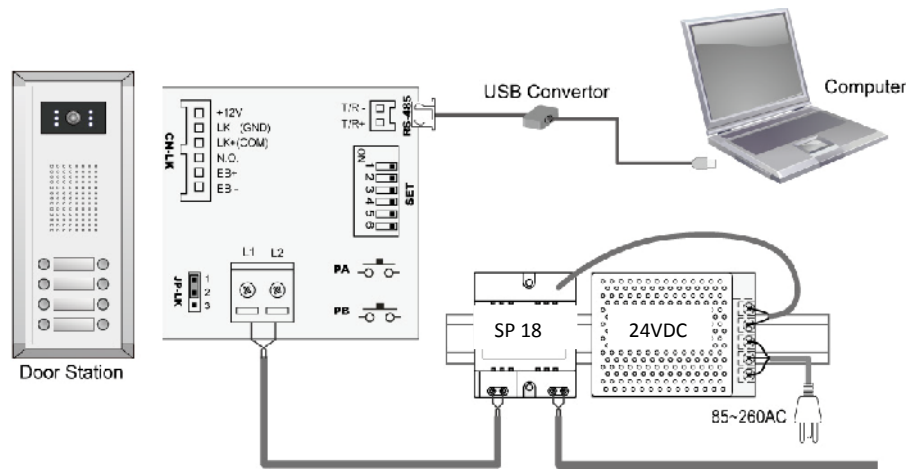
After the correct COM port has been selected, the COM PORT ICON will stop flashing.



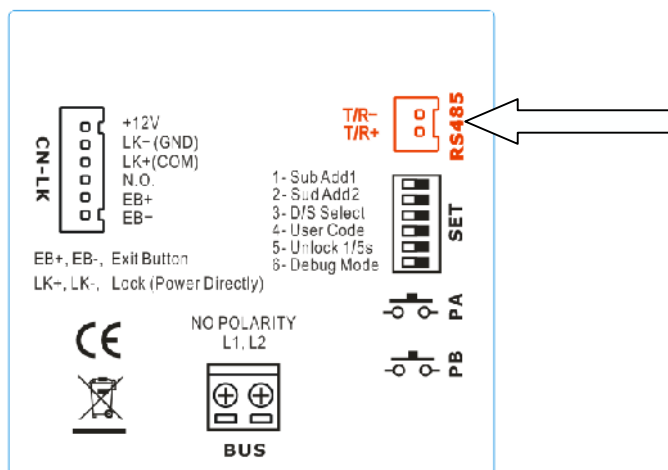
This ICON means the USB to RS485 converter has been connected.

## Connect A Door Station

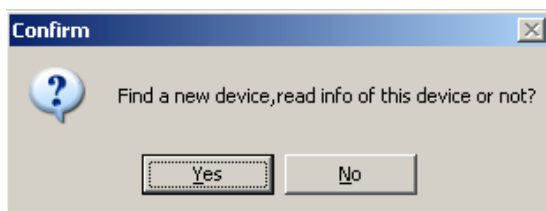
Connect the Door Station, SP 18, 24VDC correctly, then power on the system. However, you can connect the Door Station with Monitors also installed, such as in a finished installation.



Connect the 2pin plug of the converter, to the RS485 socket in Door Station, which you will find on the wiring box.

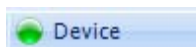


After connecting correctly, a window will pop up, to indicate that a Door Station is found.



Select Yes to read configuration data of the connected Door Station, or No to use default.

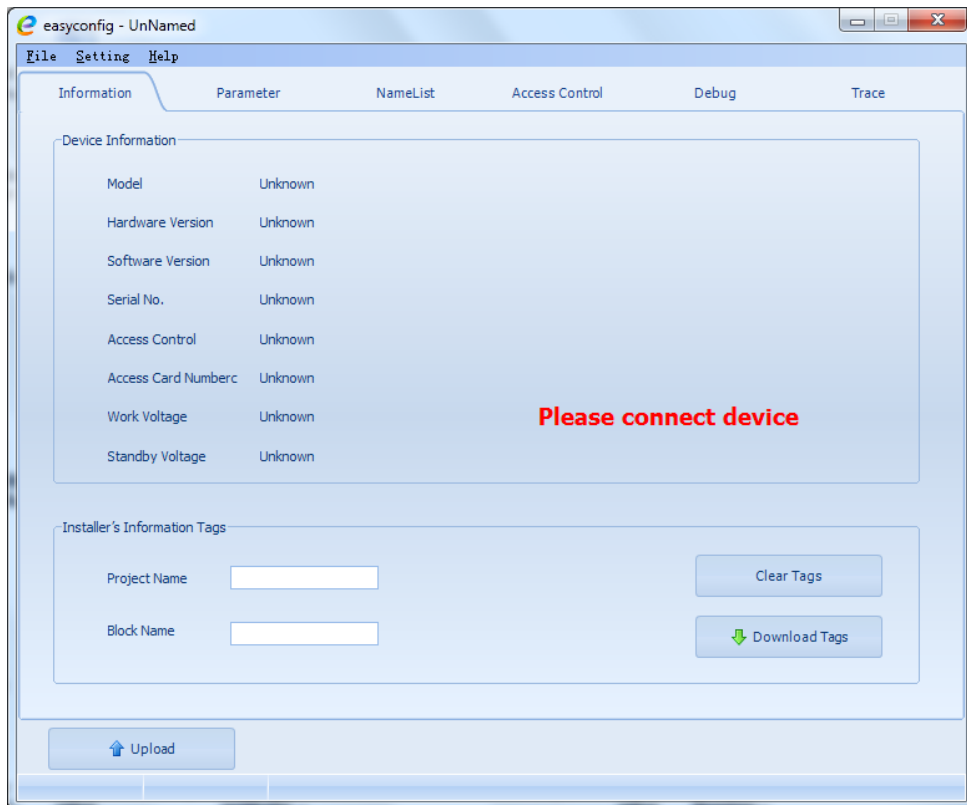
After confirm operation, the Device Icon will be light to show a Door Station is online.



This means a Door Station is connected correctly.

# General Overview Of easyconfig Software

## Main Menu



## Main Menus

- **File menu** includes all project operations, such as **New, Open, Save, Save As** and **Exit**.
- **Setting menu** includes **Com Setting** and **Language** (Not included in Demo version).
- Refer **Help** menu for help contents.

**Information** (Read/Upload from connected Door Station, can't be changed)

- **Product Model, Hardware Version, Software Version, Serial, Access Control, Access Card Number, Work Voltage, Standby Voltage.**

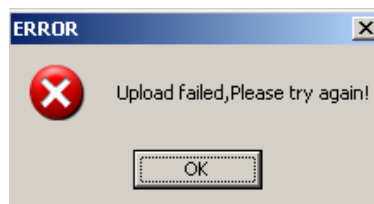
Note. **Serial** is a unique number programmed in assemble line and used for tracking

## Upload Button

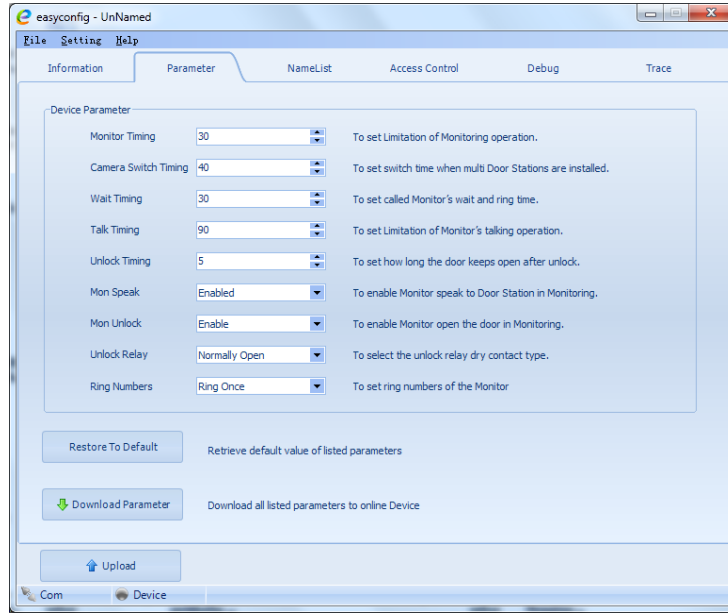
Upload function will read the connected Door Station information, including the following:

- Information on **property page**, and Parameters listed on **Parameter page**
- Panel models, Call Button mapping, Room Number and Name table on **NameList page**.

After upload operation, the result will be showed as below.



# Parameter Setup



Items	Descriptions	Default
Monitor Timing	From 6s to 600s. To set Limitation of Monitoring operation.	30 s
Camera Switch Timing	From 6s to 600s. When multi Door Stations are installed, set the Monitoring time of this Door Station, and will be switched to next Door Station after this time.	40 s
Wait Timing	From 10s to 600s. To set call wait and ring time, if Monitor don't answer a call within this time, calling will be canceled.	30 s
Talk Timing	From 10s to 600s. To set Limitation of talking operation.	90 s
Unlock Timing	From 1s to 99s. To set the time that how long the door keeps open when lock is released.	5 s
Mon Speak	To enable Monitor under monitoring state can speak to Door Station at same time. This option can be enabled/disabled.	Enabled
Mon Unlock	To enable Monitor under monitoring state can open the door at same time. This option can be None (disabled); and other 3 options all support open door operation, but with different close timing Support, None Delay (Close the Monitor after unlock), Delay 5s (Close the Monitor, 5s after unlock).	Support
Unlock Relay	To select the unlock relay dry contact type, for different lock types. This option can set to Normally Open or Close.	Normally Open
Ring Numbers	To select the ring mode: ring once, ring twice, ring thrice and cycle ring.	Ring Once

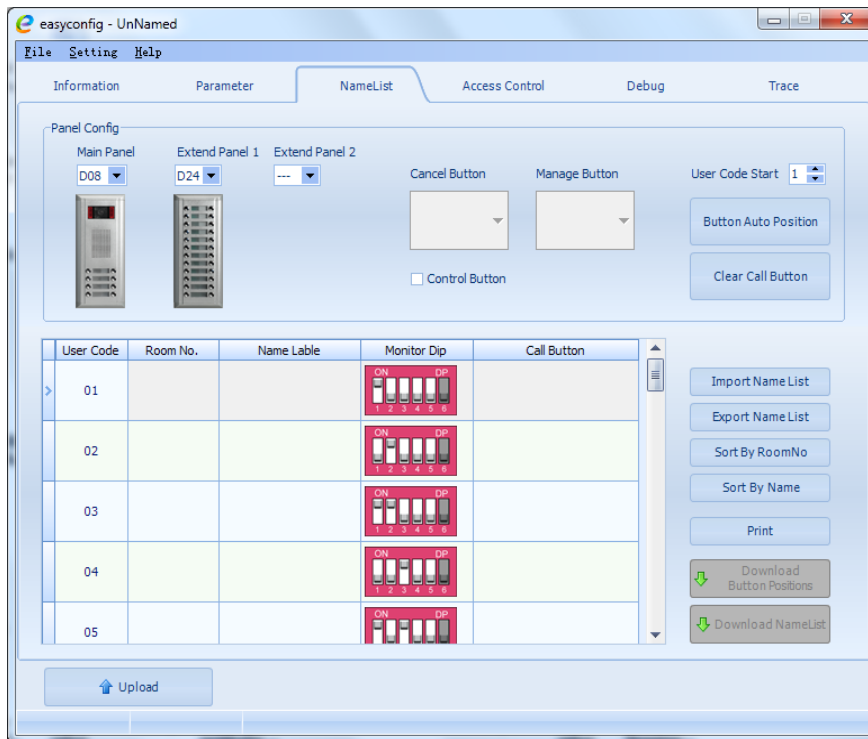
### Restore to default Button

This operation will retrieve default value of listed parameters.

### Download Parameter Button

This operation will download all the parameters on this page to connected Door Station.

# NameList Setup



## Panel Configuration

To select the Door Station and Expanded Panel combination in a specific entrance. Please note the total Call Buttons are limited to 32. If **Cancel Button** and Manage Button (**Call Guard Unit**) are needed, click [Control Button] check option, and then specify the Call Buttons to be used.

If User Code of this entrance isn't regularly arranged, set [Start User Code] if necessary.

After above operations, press **Auto Set** button to create a User Code mapping.

You can modify the User Code mapping if necessary. Also, you can click Clear Button Position button to clear the mapping, and assign the Call Button by manual.

## User Code, Name List and DIP Programming information

Edit the grids to fill Room No and Name Label, please note limitation less than 20 chars.

You can sort the table by Room No, or by Name Label. Use Download Button Position button to download Call Buttons mapping to connected Door Station.

After editing, you can export the Name Label and User Code information to TXT file, so as to create a printable name label file, which can be used to replace the Door Station name labels.

## Download NameList information

In 2-wire easydoor system, Monitors will display a intercom NameList menu for intercom calling. This name dictionary is transmitted from Door Station, and should be previously downloaded from easyconfig software. After editing NameList information in software, press **Download NameList** to save into Door Station. In field installation, when Monitors are installed, use Door Station PA button to transmit name dictionary to Monitors, see technical manual for reference.

## Print User Code programming table

Use Print Button to print a field programming reference document, it is much useful in installation and after-installation service.

Part of printing job as below, including configuration and reference table:

## DOOR STATION CONFIGURATION



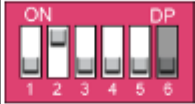



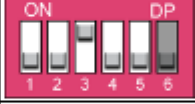









Device

Project Name                      SAMPLE PROJECT

Device Name                      Building 7, Gate 1

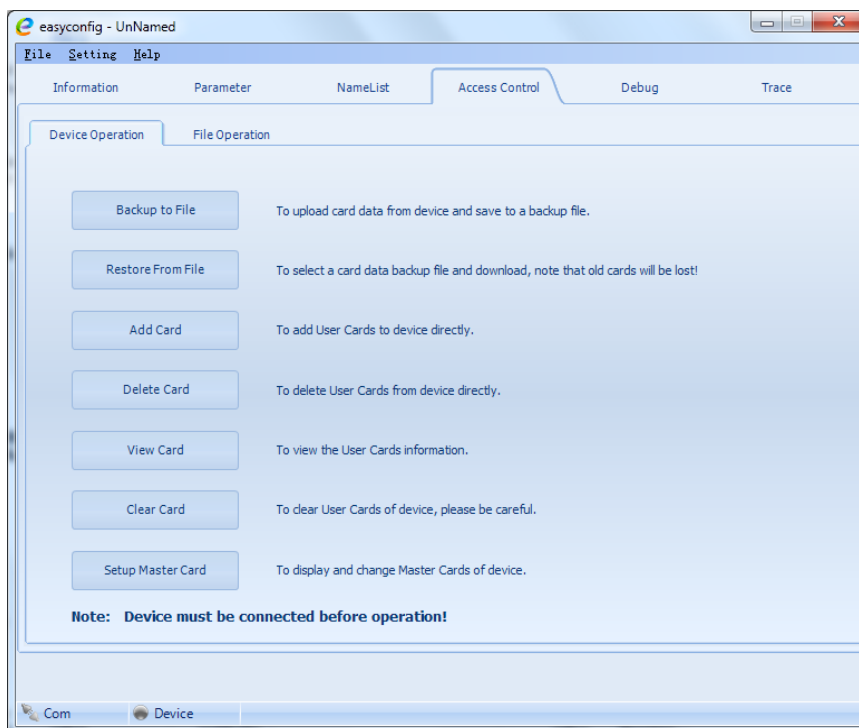
... ..

## USER CODE PROGRAMMING TABLE

User Code	Room No	Name	Dip	Button Position
01	7B-802			
02	7B-831			
03	7B-833			
04	7B-835			
05	7B-834			
06	7B-821			
07	7B-812			
08	7B-836			

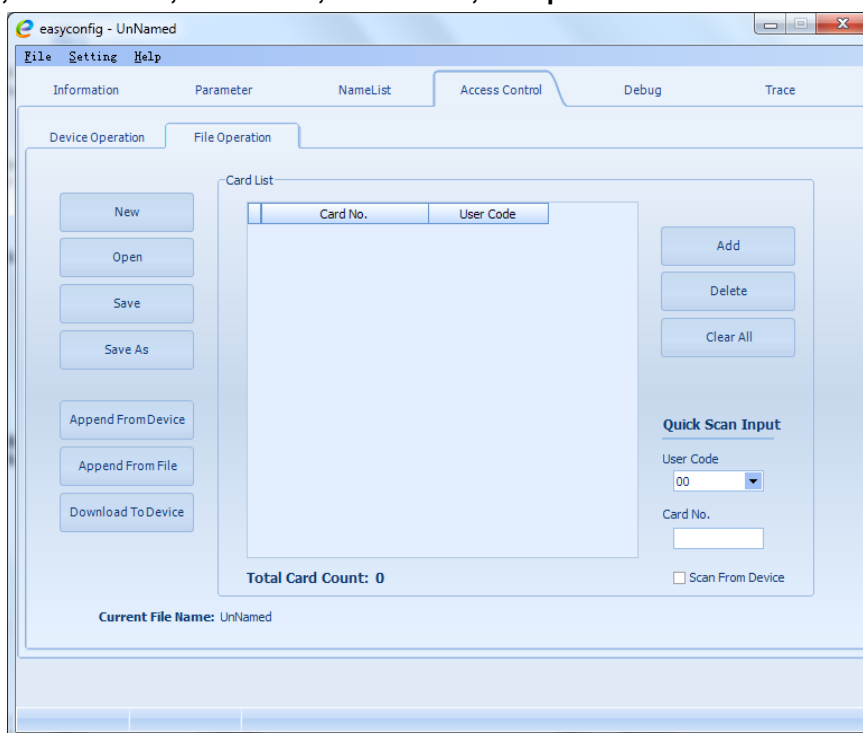


## Assess Control settings



### Device Operation

This page includes all the Card operations in the device: **Backup to File, Restore From File, Add Card, Delete Card, View Card, Clear Card, Setup Mater.**



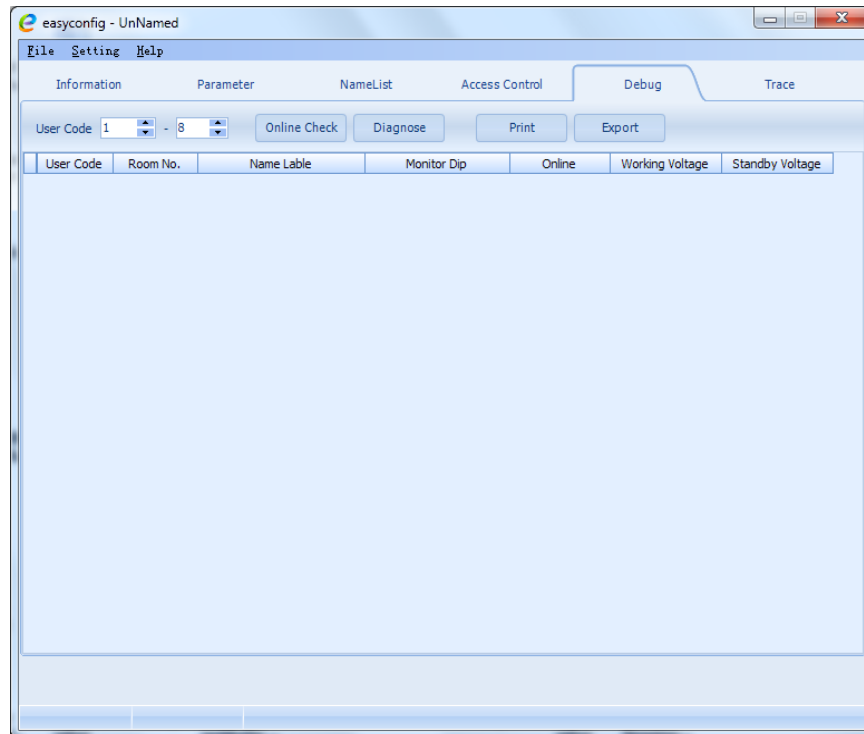
### File Operation

In this tab you can manage the file that include all the card information. You can edit the file to change the information, such as add/delete user cards to a specific User Code to the exits file, clear all card register information, and then update to the device or save the file as a backup.

---

# Use easyconfig As Debug Tools

## Debug Tool



### User Code Range

To change the User Code start and end address, only set valid range will save more time.

### Online Check Button

Use this button to start Online searching, and the result will be showed in list window. Online search function is designed for the purpose of getting a quick view of the Monitors installing situations, or to check if each of them works or not. This is very useful for installation maintain.

### Diagnose Button

Use this button to start Diagnose operation, and the result will be showed in list window.

Diagnose operation will check the Monitor's working voltage and standby voltage, video signal presentence, and data communication.

By means of this tool, if a Monitor passes the test, generally this Monitor should works well.

### Print Button

To print the debug result window information, for installation delivery documentation or memo.

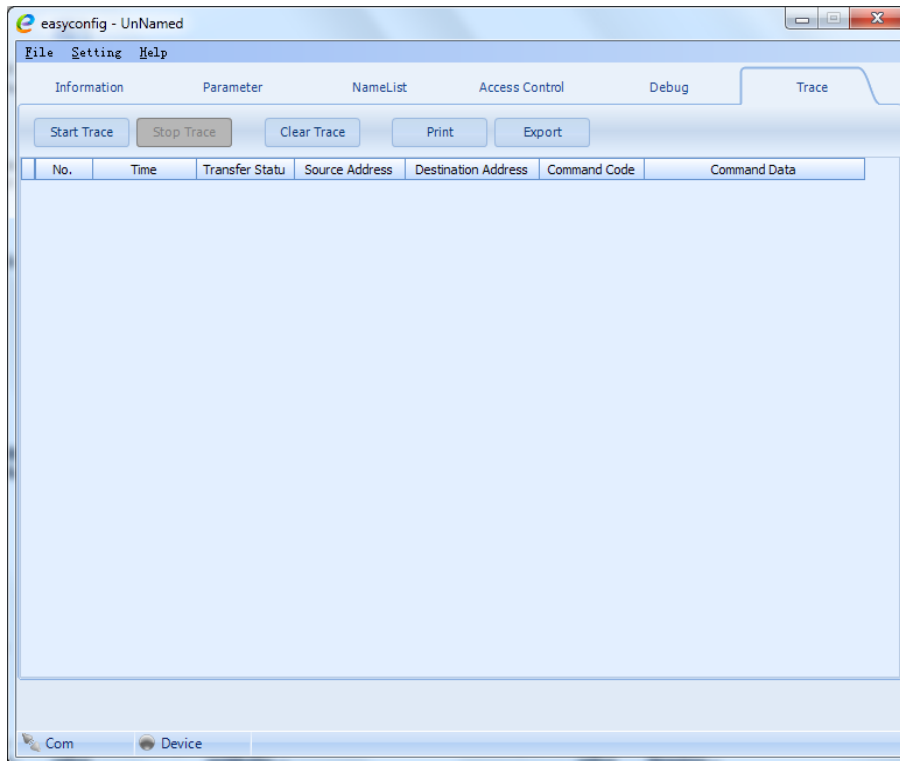
### Export Button

By means of this tool, if a Monitor passes the test, generally this Monitor should works well.

To export the debug result window information, you can analyze it in EXCEL sheet.

---

## Trace Tool



### About trace

TRACE tool will display all data communication information presented on 2-wire BUS, which can be a high-end tool used by expertise to check the system stability, or locate the problem more easily in a complex installation.

Please note, it is not suitable for normal installers, as the data streams are complex.

However, installers can send back the trace log, thus the engineers can analyze and help.

### Start Trace Button

To initiate and start trace operation, when system works, result will be automatically send back and displayed in log window.

### Stop Trace Button

To stop trace operation.

### Clear Trace Button

To clear the log listed in window, when you need to trace a new operation, it is useful.

### Print Button

To print the log listed in the result window.

### Export Button

To export the log listed in the result window to a TXT file. When you need to send back the trace log, or analyze in EXCEL sheet, you should export the log first, then open it in EXCEL.